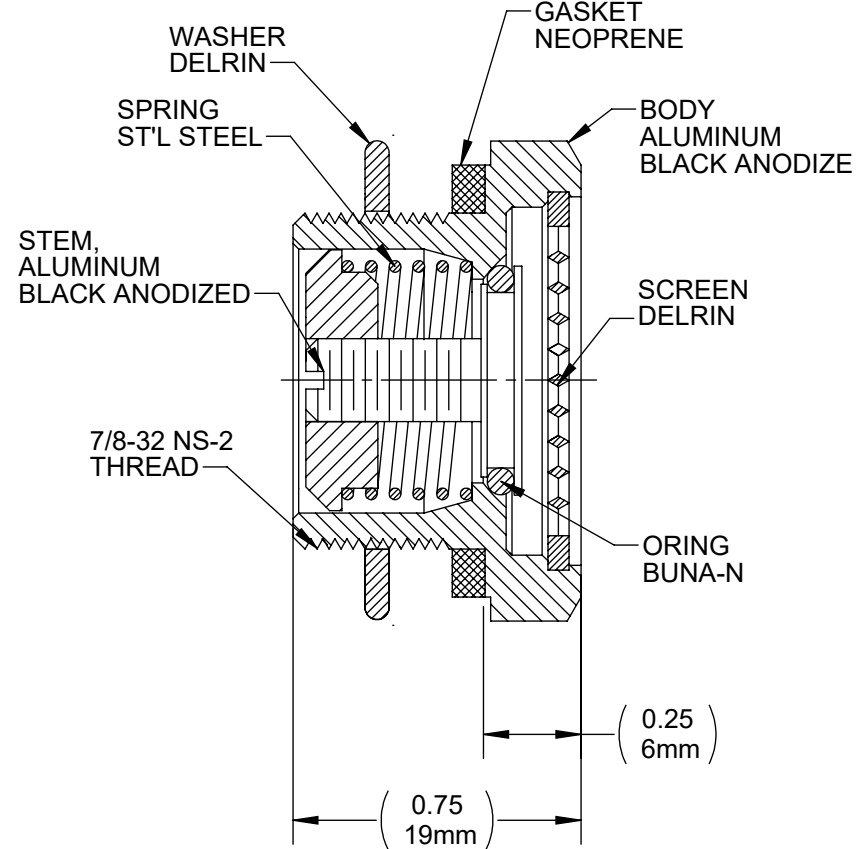
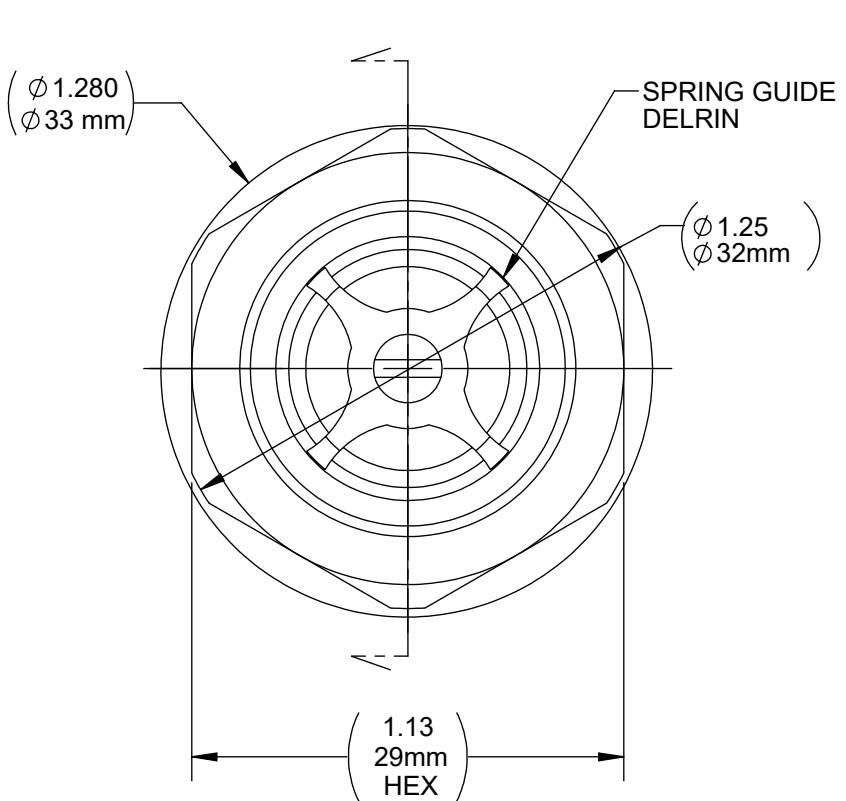



DRAWING NO. C780RPA10F	REV A	Customer Drawing	REVISION HISTORY			
			REV	DESCRIPTION (ECO)	DATE	APPROVED
			A	NEW DRW. ECO 10501	05/07/20	AK



NOTES:

1. CRACKING PRESSURE - 0.940 - 1.002 PSI.
2. CRITICAL DIMENSIONS ARE CIRCLED AND SUBJECT TO INSPECTION.
3. DIMENSIONS IN PARENTHESES ARE FOR REFERENCE ONLY.
4. ALL DIMENSIONS ARE IN INCHES, WITH NOMINAL DIMENSION IN METRIC BELOW.
5. TEMPERATURE RANGE: -40°F TO 180°F
6. MATERIAL MUST BE DFARS 252.225.7009, OR 252.225.7014 COMPLIANT .
7. MATERIAL MUST BE ROHS COMPLIANT.



7. MATERIAL MUST BE ROHS COMPLIANT.		DRAWN BY DMC		DATE 05/07/20		HR® Halkey-Roberts®	
		APPROVED BY		DATE			
		MATERIAL				TITLE	
		FINISH				RELIEF VALVE PRESSURE	
MOLDED PARTS: GATES, PARTING LINES, AND FLASH PER QUALITY CRITERIA		UNLESS OTHERWISE SPECIFIED:		THIRD ANGLE PROJECTION		SIZE	
		DIMENSIONS ARE IN INCHES				DRAWING NO.	
PROPRIETARY AND CONFIDENTIAL		TOLERANCES:				A	
THE INFORMATION CONTAINED IN THIS DRAWING IS SOLE PROPERTY OF HALKEY-ROBERTS CORPORATION ST. PETERSBURG, FL. ANY REPRODUCTION IN PART OR AS A WHOLE WITHOUT THE WRITTEN PERMISSION OF HALKEY-ROBERTS CORPORATION IS PROHIBITED.		ANGULAR: ± 1°				C780RPA10F	
		TWO PLACE DECIMAL ± .01		SCALE		DO NOT SCALE DRAWING	
		THREE PLACE DECIMAL ± .005				SHEET 1 OF 1	

MOLDED PARTS:
GATES, PARTING LINES, AND FLASH PER QUALITY CRITERIA

PROPRIETARY AND CONFIDENTIAL
THE INFORMATION CONTAINED IN THIS DRAWING IS SOLE PROPERTY OF HALKEY-ROBERTS CORPORATION ST. PETERSBURG, FL. ANY REPRODUCTION IN PART OR AS A WHOLE WITHOUT THE WRITTEN PERMISSION OF HALKEY-ROBERTS CORPORATION IS PROHIBITED.